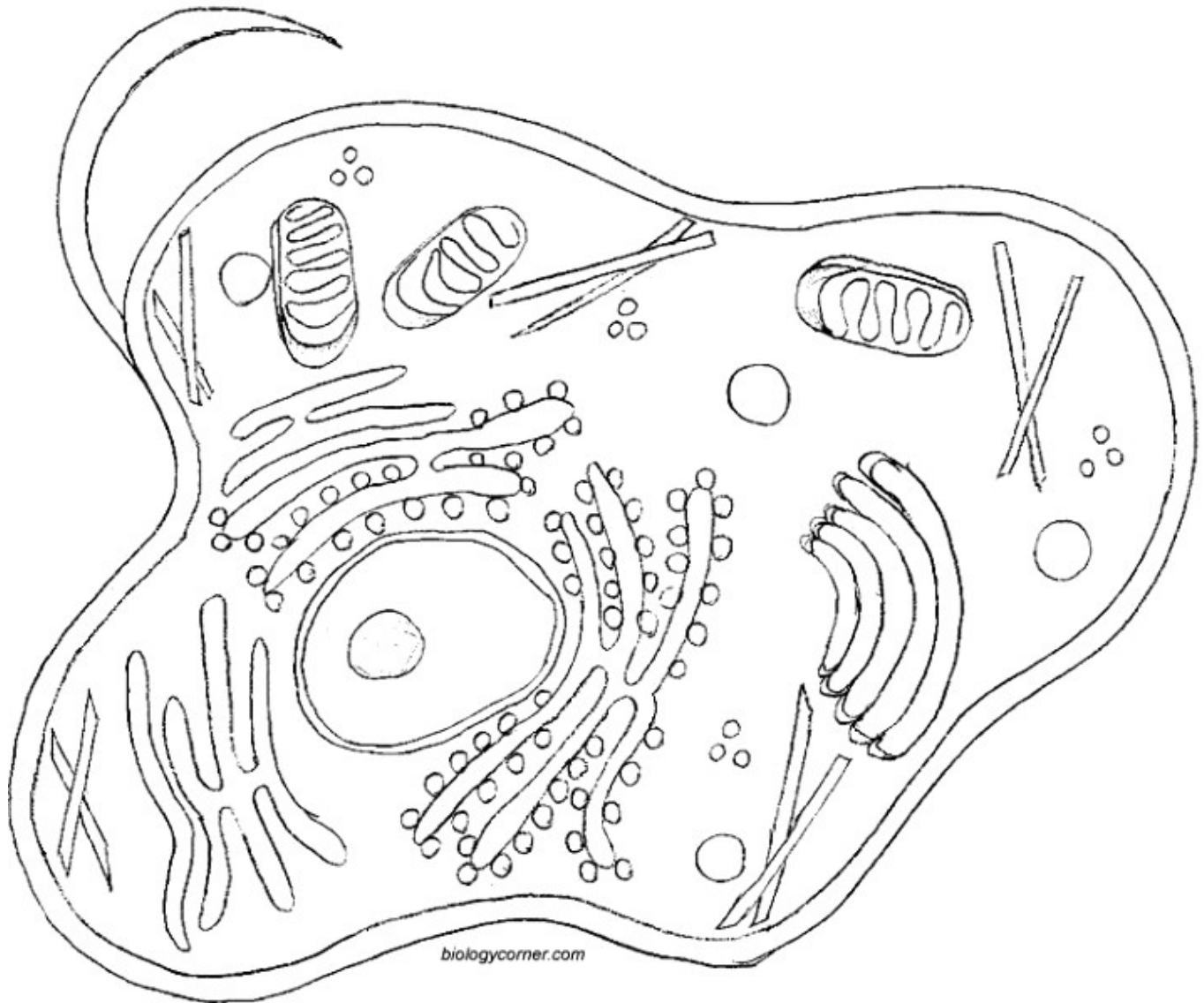


Animal Cell Coloring

Directions: Color each part of the cell its designated color.

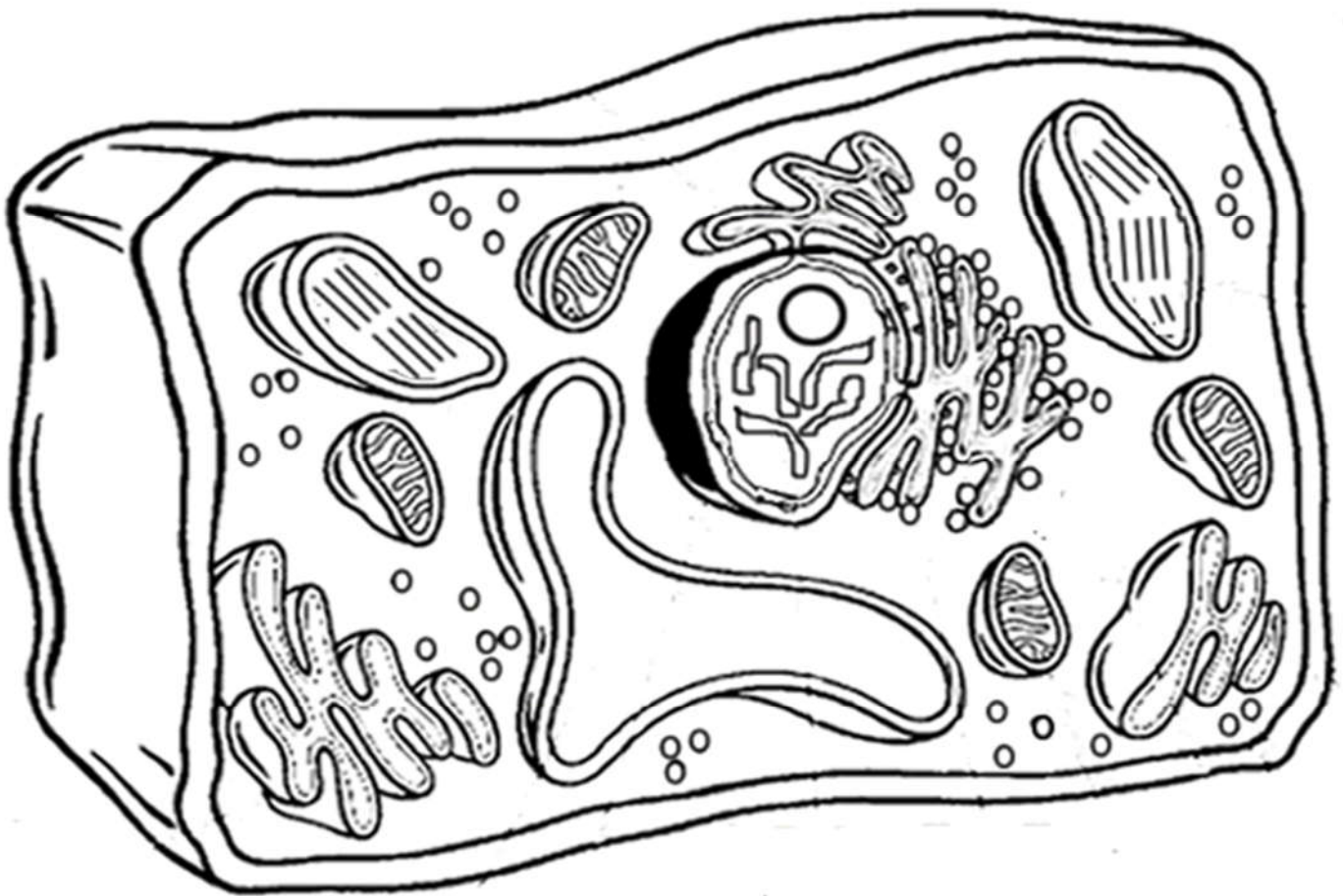
- | | | |
|--|--|--|
| <input type="checkbox"/> Cell Membrane (light brown) | <input type="checkbox"/> Nucleus (black) | <input type="checkbox"/> Mitochondria (orange) |
| <input type="checkbox"/> Cytoplasm (light yellow) | <input type="checkbox"/> Golgi Apparatus (pink) | <input type="checkbox"/> Lysosome (purple) |
| <input type="checkbox"/> Nuclear Membrane (dk brown) | <input type="checkbox"/> Flagella (red/blue striped) | <input type="checkbox"/> Ribosome (red) |
| <input type="checkbox"/> Microtubules (dark green) | <input type="checkbox"/> Rough Endoplasmic Reticulum (dark blue) | |
| | <input type="checkbox"/> Smooth Endoplasmic Reticulum (light blue) | |



Plant Cell Coloring

Directions: Color each part of the cell its designated color.

- | | | |
|--|--|---|
| <input type="checkbox"/> Cell Membrane (light brown) | <input type="checkbox"/> Cell Wall (dark green) | <input type="checkbox"/> Ribosome (red) |
| <input type="checkbox"/> Nuclear Membrane (dk brown) | <input type="checkbox"/> Nucleus (black) | <input type="checkbox"/> Cytoplasm (light yellow) |
| <input type="checkbox"/> Mitochondria (orange) | <input type="checkbox"/> Chloroplasts (light green) | <input type="checkbox"/> Golgi Apparatus (not pictured) |
| <input type="checkbox"/> Vacuole (blank) | <input type="checkbox"/> Smooth Endoplasmic Reticulum (light blue) | |
| | <input type="checkbox"/> Rough Endoplasmic Reticulum (dark blue) | |



1. Name two things found in a plant cell that are not found in an animal cell:

Parts of a Cell Matching: Match each organelle with its function within the cell.

Word Bank:

Cell membrane

Cell wall

Centrioles

Chloroplast

Cilia

Cytoplasm

Endoplasmic reticulum

Flagellum

Golgi bodies

Lysosomes

Mitochondria

Nuclear membrane

Nucleus

Ribosomes

Vacuoles

1. Controls the movement of substances into and out of the cell	
2. Watery material which contains many of the materials involved in cell metabolism.	
3. Serves as a pathway for the transport of materials throughout the cell; also associated with synthesis and storage	
4. Serves as the control center for cell metabolism and reproduction	
5. Site of protein synthesis	
6. Involved in the digestion and breakdown of waste within the cell	
7. The “powerhouse” of the cell. Site of cellular respiration	
8. Packages and secretes the products of the cell	
9. Involved in cell division in animal cells	
10. Large storage space for food or waste in plant cells	
11. Controls the movement of substances into and out of the nucleus	
12. Gives a cell its shape and provides protection; not found in animal cells	
13. Hair-like structures with the capacity for movement	
14. A long hair-like structure used for movement.	
15. Site of photosynthesis	

